

Mount Benson Elementary

Consultation Presentations

April 15, 2008

Presenter: David Murchie

Summary – Past

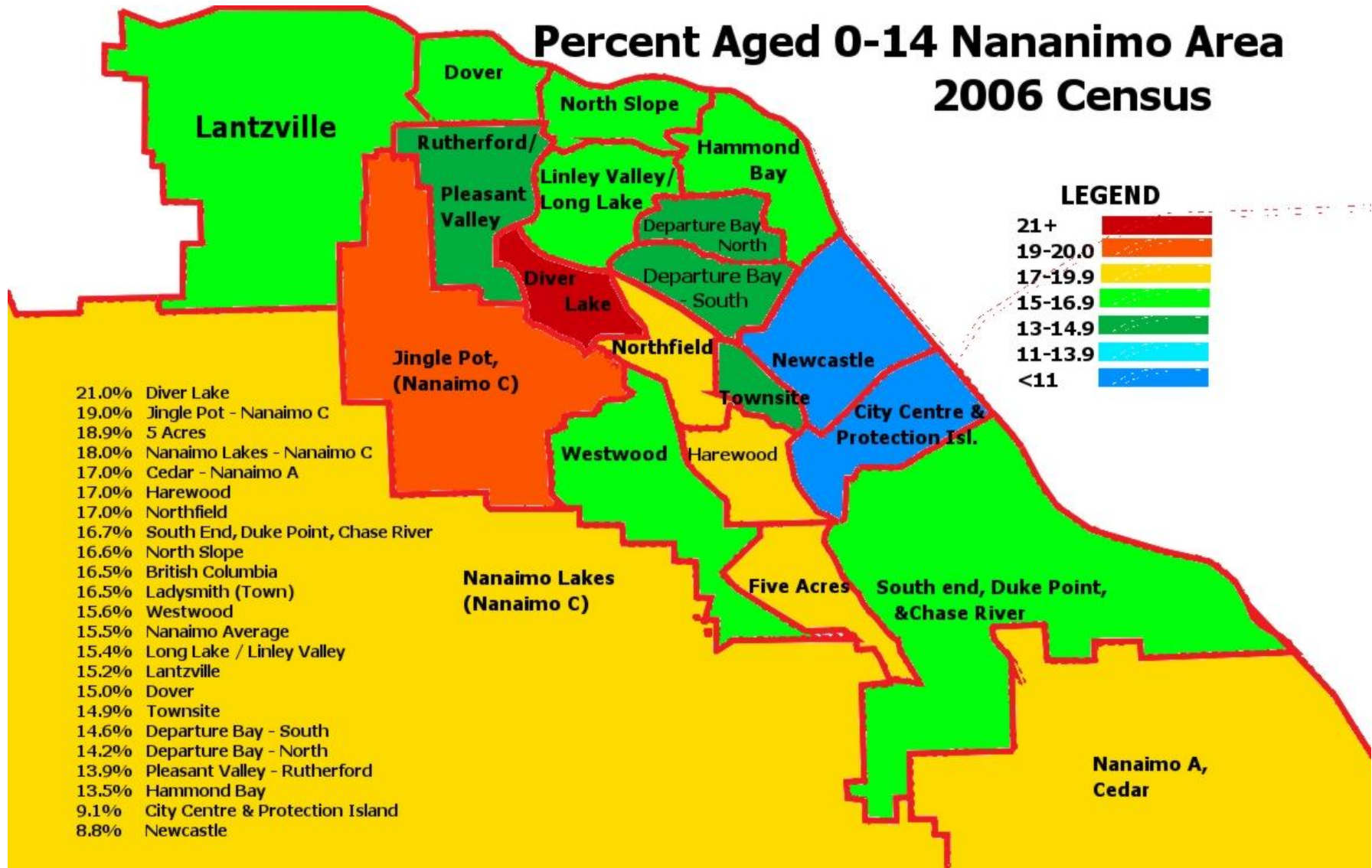
- BC's oldest operating elementary school site.
(133years)
- Vision has kept it at Centre of Community

Present

- Still an optimal school site
- 21% of neighbourhood under 15
- Too many kids in Catchment for School's size.
- 7% enrolment growth since September
- New Students are mostly Albertans

Oldest School Site / Youngest Neighbourhood

Percent Aged 0-14 Nanaimo Area 2006 Census



Future

- Districts Enrolment will go up
- Mount Benson Site will still be optimal.
- Mount Benson will need to expand

School Size

- International Trends are for Smaller Schools.
- Average USA Secondary school is under 800 students.
- Governments and National Organizations of Administrators recommend Secondary schools with a Maximum size of 600.
- 2-3 Elementary for each Secondary School.

School Size – Discussion Needed

- School size needs discussion
- Optimal school size policy requires community input
- All stakeholders need to provide input, not just Administrators.

Elementary Size Costs

Money often determines size.

District funded per student.

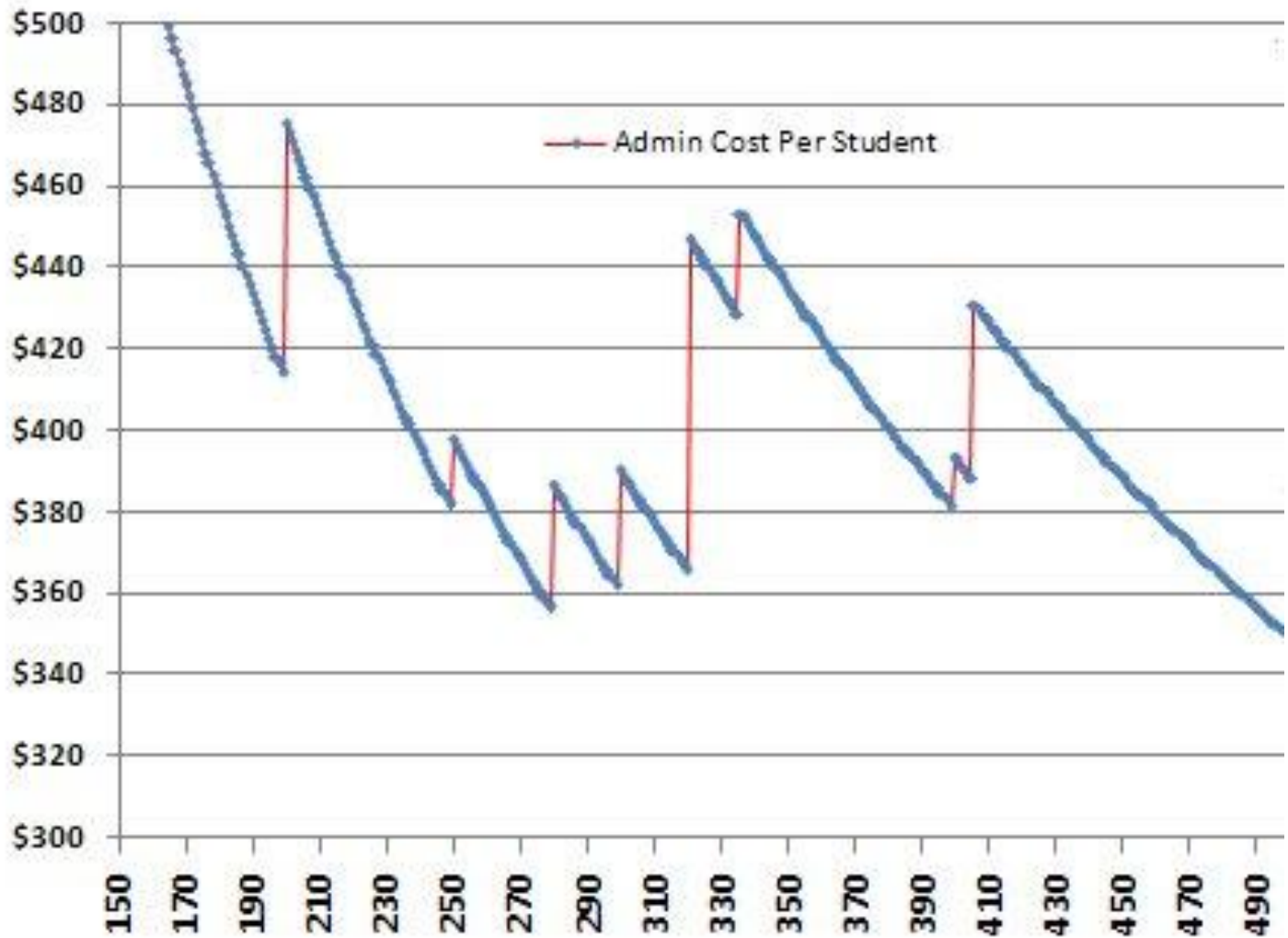
Example of per student funding.

Administration Staffing

SD68 Staffing Formula

School Administration	
Student FTE	Formula Admin
50-149	0.500
150-199	0.650
200-249	0.750
250-279	0.800
280-299	0.900
300-320	1.000
321-335	1.100
336-405	1.200
406-499	1.400

Admin Cost Per FTE Students



Elementary Administration

- School of 279 has lowest FTE costs. (Uplands)
- Schools over 319 Cost \$20k-\$30k a year more for administration.
- Optimal School size: 160-319

Facility Report Impact

- Facility Reports target 25 elementary schools.
- Most elementary schools over 319FTE by 2016
- Formula staffing: costs go up.
- All schools require Vice Principals
- Number of school go down, Costs go up.

School Size vs. Neighbourhood

- Parents want Neighbourhood schools
- Size is dictated by Neighbourhood density.
- City Densification will increase School size.
- Previously successful large schools, were also neighbourhood schools.

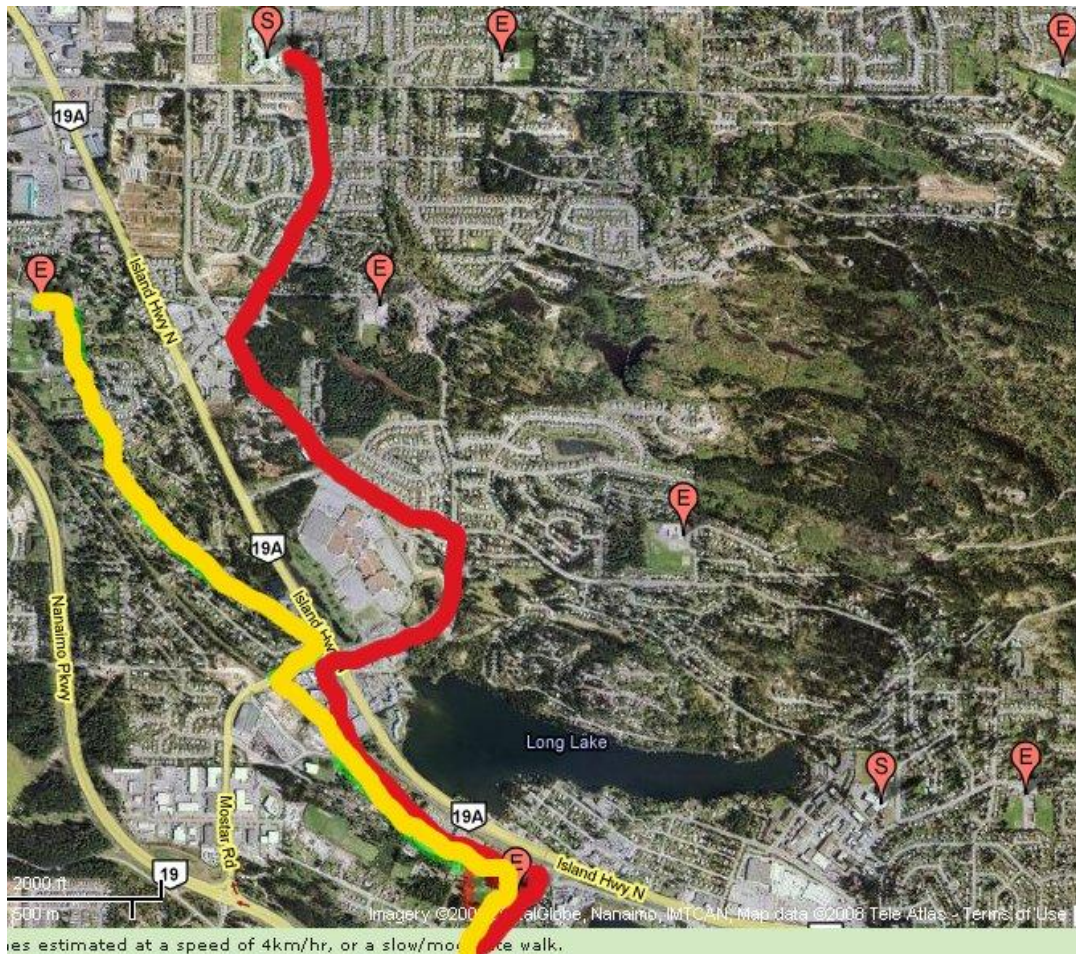
Community Catchments

- Catchments should be aligned along neighbourhood boundaries.
- Creating large schools with arbitrary catchments does not result in the same school experience.

Large Catchments

- Some Families by Mount Benson 4.1km from Pleasant Valley
(If using crosswalks and sidewalks)

Yellow = 4.1km (Compare Frank J. Ney)

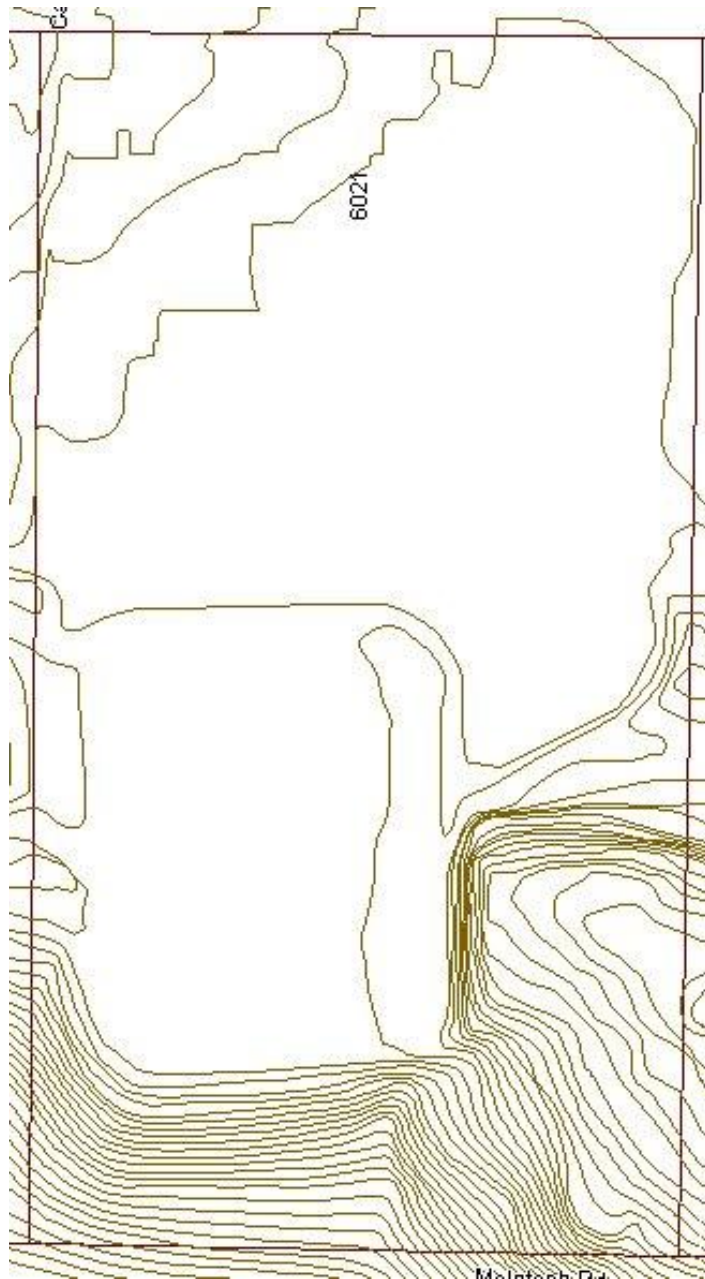


Site Size / Playfields

- Ministry set requirements on Playfield and site size.
- Most sites fall short.

Good Sites Hard to Find





Not Flat

Small Playfield = Limited Use



Another Example

- Large Frank J. Ney site Playfield is below Ministry Standards.
- Site is large.
- Long lot with waterway limits usable space.
- Intermediates use nearby City Park Fields.

Working For SD68

- Use Standards to the Advantage of Students
- Facility Plans should focus on preserving best sites.
- Use Ministerial Requirements to our advantage, not to our disadvantage.